

DESIGNING INNOVATION

The Modular LC Series Clamp

NEW

Modular Design

- Uses standard components
- No design, machining or welding needed

Adjustable Arm Opening

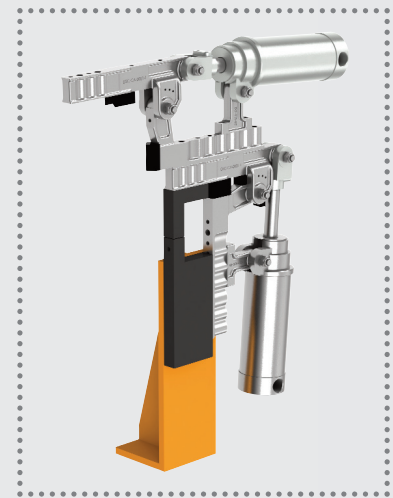
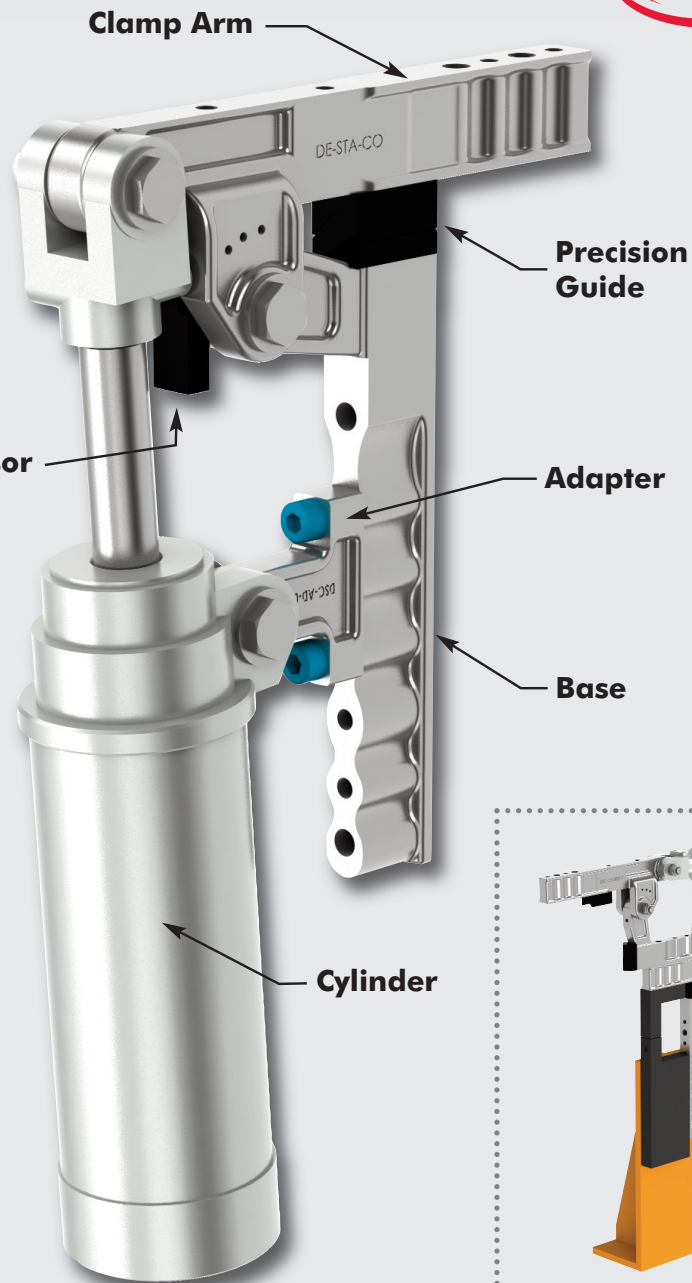
- The adaptor for the cylinder can be assembled in different positions for different arm opening angles

Cylinder Sizes

- 40mm, 50mm and 63mm

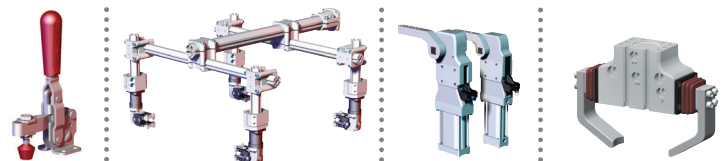
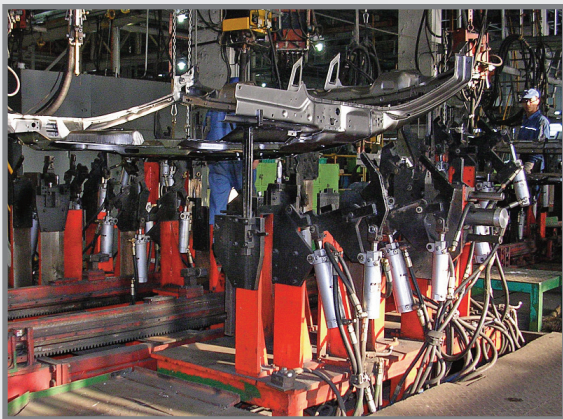
Inductive Sensor and Precision Guide

- Optional preloaded sensor and precision guide available
- Sensor protected



Patent Pending

Clamp arm and base has same hole pattern for optional second clamp mounting

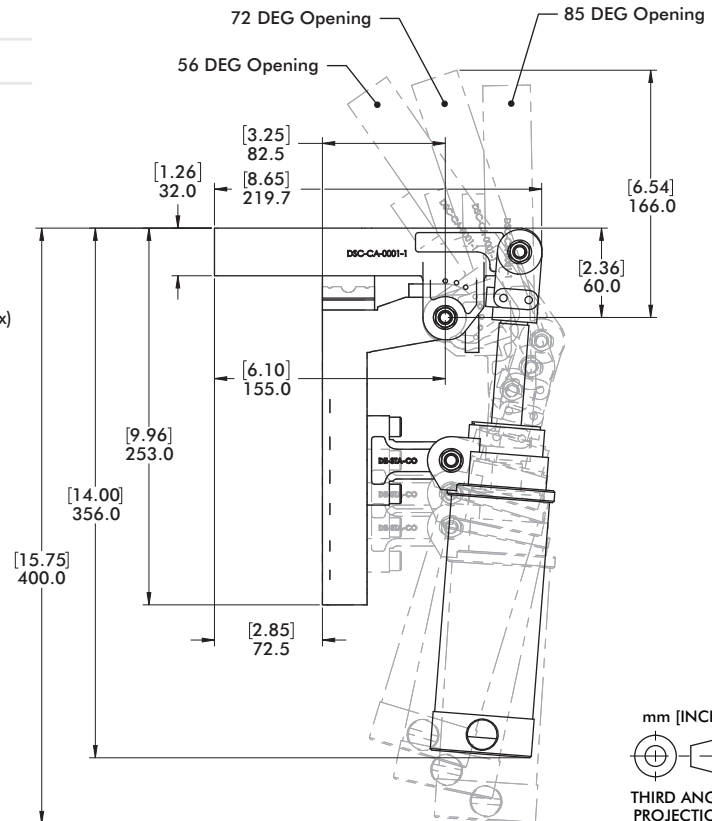
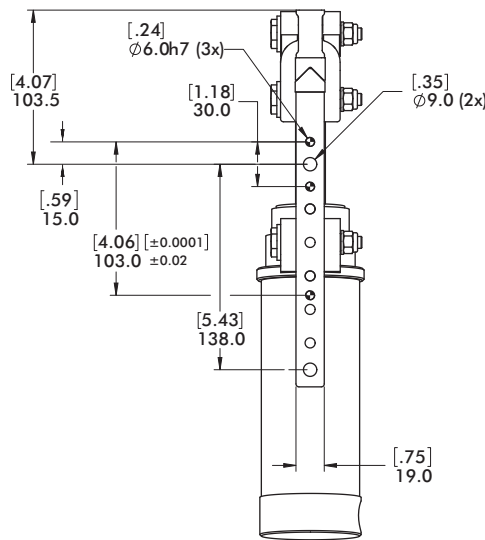
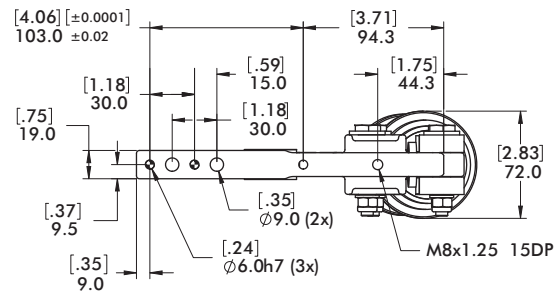


Courtesy of CMA/Flodyne/Hydradyne • Motion Control • Hydraulic • Pneumatic • Electrical • Mechanical • (800) 426-5480 • www.cmaf.com

Specifications

LC01-1

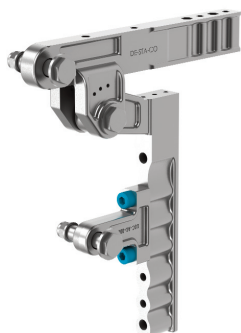
Clamping torque with 63mm cylinder @ 5bar	70Nm
Clamping torque with 50mm cylinder @ 5bar	40Nm
Clamping torque with 40mm cylinder @ 5bar	28Nm
Opening angle, Position 1	85°
Opening angle, Position 2	72°
Opening angle, Position 3	56°
Cylinder stroke	100mm



mm [INCH]
THIRD ANGLE PROJECTION

Example Order No.: **LC01-1 40 FE CA G1**

LC01-1 = Linkage



Linkage
(includes bolts)

00 = without Cylinder
40 = 40mm Cylinder
50 = 50mm Cylinder
63 = 63mm Cylinder



Cylinder Diameter

00 = without Cylinder
FE = FESTO
CK = CKD
SM = SMC

Cylinder Brand Options

00 = without Sensor
CA = with Sensor (PNP)
CB = with Sensor (NPN)



Sensor
(Connector M12x1, fixed)

00 = without Guide
G1



G2



Precision Guide

DSC_LC-F_0611